

# ON STAYING SAFE

---

## EMPLOYEE ESSENTIAL PRODUCTS



# BARRON

SWITCH YOUR BRAND ON 

---



# WEAR CLEAN REPEAT

The usage of any type of mask should be accompanied by strictly adhering to safe use guidelines. Wash your hands before applying and before removing/ after removing the mask.



## If appropriately used, and cleaned can offer these Benefits:



The mask reduces transmission of droplets from any person coughing or sneezing

Will reduce exposure in overcrowded areas such as taxis, grocery stores or seeking healthcare

## Very important to remember:



Only use a mask that has been cleaned & ironed

Place mask to cover both your nose and mouth

Make sure the mask fits well

Masks are effective only when used in combination with frequent hand-cleaning rub or soap and water and washing hands frequently

## When could it be used:



Travel to and from work in public transport

When stepping outside the house to go shopping or seeking healthcare

In self-isolation when in contact with others (remember distancing is still recommended)

When cleaning the streets/disposing of domestic rubbish

## Maintaining the mask:



Wash the mask daily in soap and hot water

Rinse thoroughly and dry

Iron the mask with hot iron – is the best means of disinfection





**MM2**  
2 PLY COTTON FABRIC MASK (PACK OF 50)

**Features:** 100% Cotton • Comfortable ear loops • 2 ply • Breathable material • Washable • Comes in a pack of 50



Blue



Jade



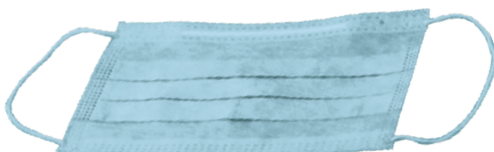
**MM3**  
PLEATED J54 COTTON FABRIC MASK (PACK OF 50)

**Features:** J54 100% Cotton material • Comfortable ear loops • Breathable material • Washable • Comes in a pack of 50



**MM1**  
3-PLY DISPOSABLE FACE MASK (PACK OF 50)

**Features:** 3 ply, 1st layer outside - 25g Non woven, 2nd ply 25g high density filter, 3rd ply inner 25g non woven • Three-fold design • Breathable material • Comfortable ear loops • Offers high levels protection • CE, FDA Certified • Comes in a pack of 50



**FS001**  
FACE SHIELD (BOX OF 150)

**Features:** Adjustable size to fit all • Re-usable • Easily cleaned and disinfected • 100% recyclable • Designed to cover exposed facial parts • Doesn't interfere with head movement • Comes in a box of 150





**HSA050**  
50 ML HAND SANITISER (BOX OF 120)

**Features:** 70 % Alcohol • Convenient size for transport • Has added moisturizer • Proven efficacy • Certification provided • Offers high levels protection • Comes in a pack of 120



**HSA100**  
100ML HAND SANITISER (BOX OF 70)

**Features:** 70 % Alcohol • Easy application • Flip top prevents leakage • Proven efficacy • Certification provided • Offers high levels protection • Comes in a pack of 70



**HSA200**  
200ML HAND SANITISER (BOX OF 12)

**Features:** 70 % Alcohol • Easy application • Flip top prevents leakage • Proven efficacy • Certification provided • Offers high levels protection • Comes in a pack of 12



**HSA400**  
400ML HAND SANITISER (BOX OF 36)

**Features:** 70 % Alcohol • Easy application • Flip top prevents leakage • Proven efficacy • Certification provided • Offers high levels protection • Comes in a pack of 36



**HSA05L**  
5 LITRES HAND SANITISER (BOX OF 2)

**Features:** 70 % Alcohol • Available in gel or liquid option • Cost effective option • Proven efficacy • Certification provided • Offers high levels protection • Comes in a pack of 2





**HSP001**  
SANITISER FOOT PUMP

**Features:** Robust • No Staff Required to Operate • Easy for Consumers to Operate  
• Requires Zero Electricity of Maintenance • Assembled size: Base 300mm x 300mm and 930mm high • Available in black (Powder coated)  
• Offers high levels protection



**HSS003**  
5ML HAND SANITISER SACHET (PACK OF 300)

**Features:** 70 % Alcohol • Convenient to carry • Easily opened and dispensed  
• Light to transport • Proven efficacy • Certification provided • Offers high levels protection • Comes in a pack of 300



**HST500**  
HAND SANITISER TUB WITH 500 WIPES (BOX OF 6)

**Features:** Neutralises Pathogens on all surfaces • Doesn't contain any known Carcinogenic Agents • Wipes are environmental friendly as it's biodegradable  
• Kills 99,99% of bacteria, viruses, fungi, mildew & algae • Proven efficacy  
• Certification provided • Sold in a box of 6



**SF001**  
BARRON DEFENDER SAFETY BOOT

**Features:** SABS SANS 20345 approved safety boot • Anti-static easily removable inner sole • Oil resistant • Slip resistant • Shock absorbent • This robust boot also has a steel toe cap with impact protection of 200 Joules • Heat resistant up to 90°C • Genuine leather upper and dual density PU sole



**IKEM-GUM**  
BARRON IKEMBA GUMBOOT

**Features:** Made from PVC • Anti-bacterial functions • Ankle support reinforces the achilles tendon area for additional support • Solvent resistance • Water resistance • Blood, fat and oil resistance • Provides excellent grip on terrain • Reinforced PVC toe cap support • SABS 20347 approved



**IMAR-GUM**  
BARRON IMARA GUMBOOT

**Features:** Made from PVC • Reinforced PVC toe cap support • Ankle support reinforces the achilles tendon area for additional support • Water resistance • Slip resistance on dry surfaces • Provides excellent grip on terrain



**NOM-GUM**  
BARRON NOMANDLA GUMBOOT

**Features:** Made from PVC • SABS 20345 approved • The ankle pad helps to stabilize, protect and support this area of the foot • Steel toe cap • Slip resistance on dry surfaces • Water resistance • Oil resistance • Provides excellent grip on all terrain



**SF007**  
BARRON OCCUPATIONAL SHOE

**Features:** CE ISO20347: 2011 approved occupational lightweight shoe • Single density PU sole • Water resistant • Anti-static • Anti-slip • Anti-bacterial insole • Oil resistant • Unisex • Perfect for chefs, hospitals and front-line staff • Elasticated side panel • Microfiber upper and higher heel



**SF003**  
BARRON CHELSEA SAFETY BOOT

**Features:** CE EN ISO20345: 2011 approved safety boot • Anti-static removable inner sole • Oil resistant • Slip resistant • Shock absorbent • Steel toe cap with impact protection of 200 Joules • Heat resistant up to 90°C • Genuine leather upper and dual density PU sole



**SF004**  
BARRON PROTECTOR BOOT

**Features:** Anti-static removable inner sole • Oil resistant • Slip resistant • Shock absorbent • Durable shoe • Anti-static and oil resistant finish • Dual density PU sole





### SC-LCT LADIES CORE SCRUB TOP

**Features:** Front V-neck • Long side slits • Front patch pockets • Chest pocket with a pen slot • Princess panels • Set sleeves  
**Fabrication:** 180g Poly Cotton



Dusk Blue

Navy

Green

### SC-LCP LADIES CORE SCRUB PANTS

**Features:** Comfortable pants to wear around the hospital • Elasticated waistband with draw cord • Front slanted pockets • Single edge stitching on front and back rise and inleg  
**Fabrication:** 180g Poly Cotton



Dusk Blue

Navy

Green

### SC-MCT MENS CORE SCRUB TOP

**Features:** Front V-neck • Long side slits • Front patch pockets • Chest pocket with a pen slot • Set sleeves  
**Fabrication:** 180g Poly Cotton



Dusk Blue

Navy

Green

### SC-MCP MENS CORE SCRUB PANTS

**Features:** Comfortable pants to wear around the hospital • Elasticated waistband with draw cord • Front slanted pockets • Single edge stitching on front and back rise and inleg  
**Fabrication:** 180g Poly Cotton



Dusk Blue

Navy

Green



### SC-TC THEATRE CAP

**Features:** Self-fabric ties on back • One size fits all  
**Fabrication:** 180g Poly Cotton



### SF009 BARRON LOAFER CLOG

**Features:** Slip on unisex clog design • Perfect for hospitality and medical field • Shock absorbent insole • Slip resistant on dry surfaces • Water resistant • Removable inner sole • Upper and outer sole – PVC • Insole – PU with Polyester Mesh • Thicker inner sole for added comfort



**CS-DUST**  
BARRON POLY COTTON DUST COAT

**Features:** Button-through front • BARRON branding • Thigh length • An industry standard for lab, warehouse, workshop and general maintenance application • Single chest and two front pockets • Durable self-colour plastic buttons for non-scratch wear  
**Fabrication:** 190g Poly Cotton Twill fabric



**BC-DUS**  
BARRON FOOD SAFETY DUST COAT

**Features:** Revere collar and V-shaped neckline • Available in long sleeves only • Centre front velcro closure • Back hem vent for easy movement • Hidden Inner chest pocket • Perfect for food service industry  
**Fabrication:** 190g 80/20 Poly Cotton



**LAB-ALL**  
ALL-PURPOSE LONG SLEEVE LAB COAT

**Features:** Front pockets at hem • Unisex lab coat • Perfect for any profession • Concealed front opening with press studs • One piece collar • Chest pocket with pen slot and flap • Back hem vent • Long and short sleeves  
**Fabrication:** 210g Poly Cotton



**LAB-ALL**  
ALL-PURPOSE SHORT SLEEVE LAB COAT

**Features:** Front pockets at hem • Unisex lab coat • Perfect for any profession • Concealed front opening with press studs • One piece collar • Chest pocket with pen slot and flap • Back hem vent • Long and short sleeves  
**Fabrication:** 210g Poly Cotton





## CT-TT BARRON BUDGET TWO-TONE CONTI JACKET

**Features:** Front patch pockets • Contrast front and back yoke • Monza pocket • Concealed CF zip  
**Fabrication:** 190g 80/20 Poly Cotton



Navy/Red

Royal/Navy

Olive/Khaki

Grey/Black

## CT-BPC / CT-BC BARRON BUDGET POLY COTTON/100% COTTON CONTI TROUSER

**Features:** Sold according to waist sizes • Concealed metallic zip • Bar-tacking on all pressure point • Trousers have ½ elasticated waistband, two side pockets and one back pocket • Triple-stitching on the inner leg, back and front rise  
**Fabrication:** 190g Poly Cotton Twill fabric / 100% Cotton denim fabric



Emerald

Red

Orange

Royal

Olive

Black

Navy

Grey

Denim

## CJ-LS BARRON LADIES POLY COTTON CONTI JACKET

**Features:** Revere collar and V-shaped neckline • Long sleeves with stitched sleeve hem • Front yoke detail • Monza chest pocket • Two front hip pockets • Back darts and longer length for a flattering fit • Triple needle stitch detail • Side slits for added comfort and ease of movement • YKK Silver metal zip at centre front • BARRON branding  
**Fabrication:** 190g 80/20 Poly Cotton Twill fabric



## CT-LS BARRON LADIES POLY COTTON CONTI TROUSER

**Features:** Curved front hip pockets and back patch pocket • BARRON Branding • Belt loops • Triple needle stitch detail for added durability • Half elasticated waistband for adjustable fit • YKK silver metal zip at centre front  
**Fabrication:** 190g 80/20 Poly Cotton Twill fabric

## CS-DISP CONTRACT DISPOSABLE COVERALL

**Features:** Elasticated cuffs, ankles, back waist and hood • CF zip opening  
**Fabrication:** 35 gsm Non Woven material



## CON-RR CONTRACT REFLECTIVE RAIN SUIT

**Features:** Rain jacket with two front patch pockets • Elasticated cuffs and storm flap  
• Reflective tape across torso, back and knees • Trousers have an elasticated waist and double top-stitching throughout • Heat sealed seams  
**Fabrication:** 100% Waterproof Polyester PVC coated fabric



## CON-R CONTRACT RAIN SUIT

**Features:** Rain jacket with two front patch pockets • Elasticated cuffs and storm flap  
• Trousers have an elasticated waist and double top-stitching throughout  
• Heat sealed seams • Rubberised finish  
**Fabrication:** 100% Waterproof Polyester PVC coated fabric



## CON-RC CONTRACT RAIN COAT

**Features:** Raglan sleeve styling • Open sleeve • Press stud front • Double top-stitching throughout • Hood with adjustable draw cord • Heat sealed seams • Rubberised finish  
**Fabrication:** 100% Waterproof Polyester PVC coated fabric





### CS-PJ PREMIER CONTI JACKET WITH REFLECTIVE

**Features:** Jacket features include two front pockets, one chest pocket with flap and pen slot, side slits and front yoke. For added durability triple-stitching has been added to the armholes, underarm and shoulder seams • High-visibility reflective tape • Reinforced bar tacking on all pressure points  
**Fabrication:** Body Fabric: 190g 80/20 Poly Cotton Twill fabric  
 • Contrast Fabric: 220g 100% Polyester Twill Fabric



### CS-PT PREMIER CONTI TROUSER WITH REFLECTIVE

**Features:** These conti trousers have ½ elasticated waist, two side pockets and one back pocket. Other features include triple-stitching inner leg, back and front rise • High-visibility reflective tape • Bar tacking for added durability  
**Fabrication:** 190g 80/20 Poly Cotton Twill fabric



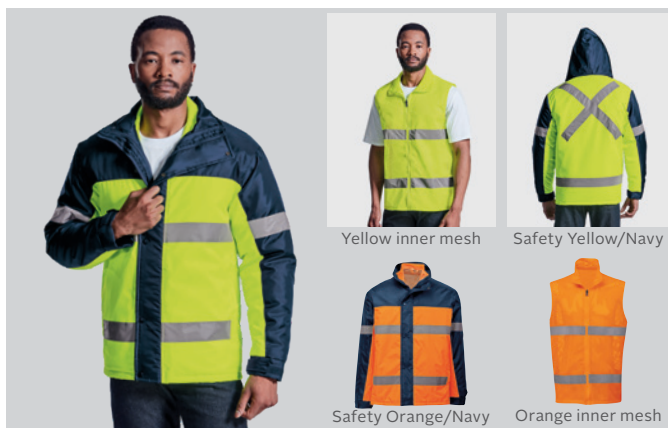
### BAR-JAC BARRICADE JACKET

**Features:** Removable sleeves • Inner zip for embroidery access • ID Pocket • Removable sleeves • Welt side pocket • Chest pockets • Sleeve pocket • Ribbed hem and cuffs • Reinforced seams • Bar tacking finish on all pressure points for a high quality work wear garment • Water resistant coating • Contrast 220g micro fleece lining  
**Fabrication:** 100% Coated oxford Polyester



### VEN-JAC VENTURE PADDED JACKET

**Features:** High-visibility reflective tape • Padded and fully lined • Two-tone medium weight jacket • Adjustable cuffs • Storm flap • Concealed hood • Two front pockets with a flap • Reinforced seams • Bar-tacked finish on all pressure points • High quality work wear garment • Water and wind resistant  
**Fabrication:** Water and wind resistant Polyester fabric



### CON3-JAC CONTRACTOR 3-IN-1 JACKET

**Features:** Reflective tape for high-visibility • Wind resistant • Versatile workwear jacket • Lightweight outer jacket • Removable zip-off mesh vest with safety tape • Combined high-visibility jacket • Front storm flap • Adjustable sleeve tabs • Concealed roll-up hood • Inner pocket • Reinforced seams • Bar-tacked finish on all pressure points for toughness • Water-resistant coating  
**Fabrication:** 100% Coated oxford Polyester



### MI-QUA QUARRY FLEECE

**Features:** Double top-stitched hem • Easy care garment • Anti-pill finish • Safety fleece with reflective tape across the chest and sleeves • Contrast collar • Chunky front zip • Side pockets • Rib-cuffs • Navy/Red is a new colourway  
**Fabrication:** 240g 100% Polyester micro fleece



**TR-JAC / LTR-JAC**  
MENS AND LADIES TRADE JACKET



**3-1-JAC / L3-1-JAC**  
MENS AND LADIES 3-IN-1 JACKET



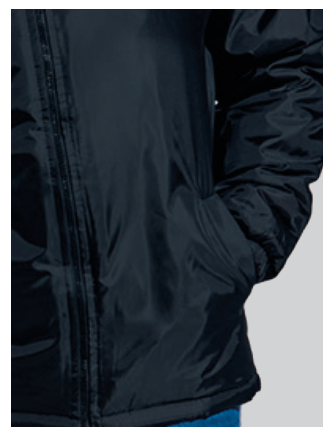
**ROCH-JAC / LROCH-JAC**  
MENS AND LADIES ROCHFORD JACKET







**NAS-JAC / LNAS-JAC**  
MENS AND LADIES NASHVILLE 3-IN1 JACKET



**MAX-JAC / LMAX-JAC**  
MENS AND LADIES MAX JACKET



**TEC-JAC / LTEC-JAC**  
MENS AND LADIES TECHNO JACKET







**IL-JAC / LIL-JAC**  
MENS AND LADIES ILLUSION JACKET



**BO / L-BO**  
MENS AND LADIES BODYWARMER



**MIC-JAC / LMIC-JAC**  
MENS AND LADIES MICHIGAN BODYWARMER







**MI-HYB / LMI-HYB**  
MENS AND LADIES HYBRID FLEECE



**MI-ES / LMI-ES**  
MENS AND LADIES ESSENTIAL MICRO FLEECE



**MI-UL / LMI-UL**  
MENS AND LADIES ULTRA MICRO FLEECE







BANNER WALLS STANDARD - SINGLE SIDED

**Features:** Digitally Printed onto Bannerweave • Light Weight Aluminium Frame • Easy to Assemble • Portable - Carry Bag Included • Single Sided Print • Height Restriction is 2.25m • Perfect for Indoor Events and Exhibitions • Size: 3.00 x 2.25m



PULL-UP BANNER - DESK MINI

**Features:** Retracts back into base • A4 Size • Portable • Easy to Assemble • Supplied in a Box • Great for Exhibitions and Office Display Use • PVC





PULL UP BANNER LUXURY - PVC

**Features:** Digitally printed on PVC or Bannerweave  
 • Single and Double Sided Print • Light Weight Portable  
 • Retracts Back into Base • Easy to Assemble - Carry Bag Included • Cost Effective Solution for Promotions  
 • Perfect for Indoor Use, Promotions and Exhibitions  
 • Available in Silver or Black Base • Size: 0.85 x 2.00m



PULL UP BANNER ECONO - PVC

**Features:** Digitally Printed on PVC  
 • Light Weight Portable • Retracts Back into Base • Easy to Assemble • Carry Bag Included  
 • Cost Effective Solution for Promotions  
 • Perfect for indoor use, Promotions and Exhibitions • Size: 0.85 x 2.00m



X-FRAME BANNERS WITH HOOKS

**Features:** Digitally Printed on PVC • Single Side Print Only • Steel and Fibreglass Hardware • Light Weight - Portable • Easy to Assemble • Eyelet Hooks • Carry Bag Included • Cost Effective Solution for Promotions and Exhibitions • Size: 60 x 160cm





PROMO TABLE

**Features:** Digitally printed onto Bannerweave • Branding is easily interchangeable  
 • Skin wraps around the table and is attached with velcro • Laminated MDF top and shelf  
 • Portable - Aluminium frame • Lightweight • Folds neatly into carry bag  
 • Size: 38 x 100 x 38cm



KIOSK

**Features:** Manufactured from plastic and metal • Folds neatly into carry bag  
 • Lightweight • Portable • Carry bag included • Size: 65.5 x 21.1 x 25cm



DIRECTORS CHAIR

**Features:** Digitally Printed onto Canvas • Single Sided Print  
 • Lightweight Aluminium Frame • Back Rest and Seat Printing Only  
 • Padding in Armrest • Max Weight 120KG • Armrest Printing Optional Extra • Perfect for Outdoor and Sporting Events • Size: 44 x 45 x 78cm



TABLE CLOTH PVC - DIGITAL

**Features:** Digitally Printed onto PVC (MAX Width of PVC is 1.25m) • Hardware Not supplied • Durable • Light Weight • Portable • Custom Sizes Available • Perfect for Indoor and Outdoor Use • Size: 2.5 x 1.25m





GAZEBO FRAME - DIGITAL

**Features:** Light Weight Aluminium • Plastic Connectors • Frame is Boxed • Canvas 240g  
• Size: 3 x 3m



GAZEBO ALUMINIUM FRAME - 1 X 1M

**Features:** Light Weight Aluminium • Plastic Connectors • Frame is Boxed • Canvas 240g • Includes black plastic shelf • Size: 1 x 1m



UMBRELLA STEEL FRAME

**Features:** Digitally Printed onto Canvas • Single sided • Lightweight Aluminium frame • Easy to Assemble • Folds Neatly into a Carry Bag • Perfect for Concerts and Restaurants • Size: 2.2 x 2.2m



FENCE WRAP - DIGITAL

**Features:** Digitally printed onto Ribtex • Single Sided Print • Custom Sizes Available • Finished with Eyelets or Sleeves • Size: 2 x 1m



White



Black



Blue



Red



Silver



#### BP7124

##### 3 IN 1 BALLPOINT PEN WITH STYLUS & PHONE STAND

**Features:** Plastic ballpoint pen • Wide clip phone holder • Capacitive stylus • Solid colour barrel • Silver tip • Capacitive stylus works with iPad, iPhone and other touchscreen devices • Blue ink



White

Light Green



Red



Silver



Black



Blue



#### BK5852

##### 3 IN 1 THUMBS UP KEYCHAIN WITH STYLUS AND LED LIGHT

**Features:** ABS Material • Thumbs up capacitive stylus • One LED light • Push button • Steel key ring • Batteries included



Lime



White



Light Blue



Red



Blue



Silver



Black

#### BP7975

##### ALUMINIUM BALLPOINT PEN WITH BLACK STYLUS

**Features:** Twist action mechanism • Silver metal clip • Textured metal grip • Capacitive stylus works with iPad, iPhone and other touchscreen devices • Black ink





**BB7097**  
DRAWSTRING BAG WITH BLACK CORNERS

**Features:** Size: 34 x 42 x 0.2cm • Material: 210D Polyester • Main compartment with cinch top  
• Drawstring design for over the shoulder or backpack carry • Solid black corners



**BB0009**  
LIGHTWEIGHT DRAWSTRING BAG - 210D

**Features:** Size: 36 x 44cm • Material: Lightweight 210D Polyester • Main compartment with cinch top  
• Drawstring design for over the shoulder or backpack carry



**BB0006**  
EVERYDAY SHOPPER - NON-WOVEN

**Features:** Size: 33 x 37cm • Material: Eco-friendly recyclable Non-woven Polypropylene • Main compartment with hook and loop closure • 60cm Handles  
• Single colour screen printing on black product





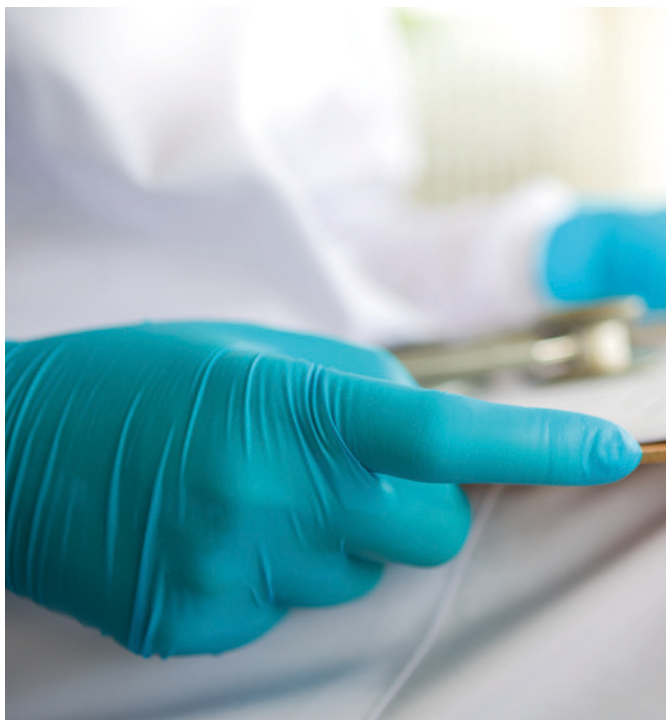
#### 2 PLY SUBLIMATED FABRIC FACE MASK

**Features:** 2 Layer form fitting face mask with ear loops • Personalize mask with your own custom sublimated design • Acts as a barrier to prevent the spread of disease • Snug, secure fit and comfortable • MOQ: 1000 units • Fabric is 100% Polyester outer with 55g Spun bond ventilation inner



#### LATEX GLOVES (BOX OF 1000)

**Features:** Disposable examination gloves • Powder free • Colour: Off White • Available in different sizes (Sizes are purely dependant on stock availability) • Ambidextrous • Each inner box contains 100 gloves (50 pairs) • MOQ: 1 Box of 1000 gloves • Sold as box of 1000 gloves (10 inner boxes)



#### NITRILE GLOVES (BOX OF 1000)

**Features:** Disposable examination gloves • Powder free • Colour: Light Blue • Available in different sizes (Sizes are purely dependant on stock availability) • Ambidextrous • Full texture gloves for better grip • MOQ: 1 Box of 1000 gloves • Each inner box contains 100 gloves (50 pairs) • Sold as box of 1000 gloves (10 inner boxes)



#### 80G DISPOSABLE COVERALL

**Features:** Elasticated cuff and ankle opening • Hood also has elasticated opening • Centre front zip opening • MOQ: 1000 units • Fabric: 80g Spun Bond fabric (100% waterproof)





### 3 PLY FABRIC FACE MASK WITH FILTER (BOX OF 200)

**Features:** 3 Ply re-usable face mask that is easy to wash • Each mask includes 1 inner filter and additional 4 filters (± 40 uses) • Filter must be replaced after 5 - 8 uses • Class 8 compliant, ISO 14644 standards • Elasticated ear loops • MOQ: 5000 units • Sold in a box of 200 masks • Fabric consists of woven outer layer, removeable filter centre and 100% Cotton inner for comfort



### SUBLIMATED BUFF

**Features:** One size fits all • Personalize buff with your own custom sublimated design • Breathable, washable and lightweight • Multiple ways to wear • MOQ: 1000 units • Fabric is 155g Polyester with moisture management



### EYE PROTECTION SAFETY GOGGLES (ANTI-FOG) - (BOX OF 300)

**Features:** Anti-fog treatment • Elasticated headband strap for adjustable and comfortable fit • MOQ: 1000 units • Sold in a box of 300 goggles • Polyvinyl chloride frame



[www.barron.com](http://www.barron.com)